

District I
1625 N French Dr , Hobbs, NM 88240
District II
1301 W Grand Avenue, Artesia, NM 88210
District III
1000 Rio Brazos Road, Aztec, NM 87410
District IV
1220 S St Francis Dr , Santa Fe, NM 87505

State of New Mexico
Energy Minerals and Natural Resources

Oil Conservation Division
1220 South St. Francis Dr.
Santa Fe, NM 87505

Submit by Email

Print Form

Form C-101
June 16, 2008

Submit to appropriate District Office

☐ AMENDED REPORT

APPLICATION FOR PERMIT TO DRILL, RE-ENTER, DEEPEN, PLUGBACK, OR ADD A ZONE

¹ Operator Name and Address PETROHAWK OPERATING COMPANY 1000 LOUISIANA STE 5600, HOUSTON, TX 7702		² OGRID Number 194849
		³ API Number 30 - 025-39178
⁴ Property Code 302433	⁵ Property Name STATE A A/C 2	⁶ Well No 98
⁹ Proposed Pool 1 EUNICE;SEVEN RIVERS-QUEEN, SOUTH		¹⁰ Proposed Pool 2

⁷ Surface Location

UL or lot no P	Section 5	Township 22S	Range 36E	Lot Idn	Feet from the 10	North/South line S	Feet from the 1308	East/West line E	County LEA
--------------------------	---------------------	------------------------	---------------------	---------	----------------------------	------------------------------	------------------------------	----------------------------	----------------------

⁸ Proposed Bottom Hole Location If Different From Surface

UL or lot no	Section	Township	Range	Lot Idn	Feet from the	North/South line	Feet from the	East/West line	County
--------------	---------	----------	-------	---------	---------------	------------------	---------------	----------------	--------

Additional Well Information

¹¹ Work Type Code N	¹² Well Type Code O	¹³ Cable/Rotary R	¹⁴ Lease Type Code S	¹⁵ Ground Level Elevation 3568
¹⁶ Multiple NO	¹⁷ Proposed Depth 4000	¹⁸ Formation QUEEN	¹⁹ Contractor	²⁰ Spud Date

²¹ Proposed Casing and Cement Program

Hole Size	Casing Size	Casing weight/foot	Setting Depth	Sacks of Cement	Estimated TOC
12.25	8.625	24	1450	650	0
7.875	5.5	15.5	4000	725	0

²² Describe the proposed program If this application is to DEEPEN or PLUG BACK, give the data on the present productive zone and proposed new productive zone
Describe the blowout prevention program, if any Use additional sheets if necessary

RECEIVED

SEP 11 2009
HOBBS OCD

²³ I hereby certify that the information given above is true and complete to the best of my knowledge and belief

Signature

Eddie W Seay

Printed name

Eddie Seay

Title

Agent

E-mail Address

seay04@leaco.net

Date

9/9/08

Phone

575-390-2454

OIL CONSERVATION DIVISION

Approved by

[Signature]

Title

Geologist

Approval Date

9/25/08

Expiration Date

9/25/10

**Permit Expires 2 Years From Approval
Date Unless Drilling Underway**

CONDITIONS OF APPROVAL for Non-Standard Location

Intent to drill ONLY — CANNOT produce until the Non-Standard
Location has been approved by OCD Santa Fe office

DISTRICT I

10 N. FRENCH DR., HOBBS, NM 88240

State of New Mexico

Energy, Minerals and Natural Resources Department

DISTRICT II

1301 W. GRAND AVENUE, ARTESIA, NM 88210

DISTRICT III

1000 Rio Brazos Rd., Aztec, NM 87410

OIL CONSERVATION DIVISION1220 SOUTH ST. FRANCIS DR.
Santa Fe, New Mexico 87505

Form C-102

Revised October 12, 2005

Submit to Appropriate District Office

State LEase - 4 Copies

Fee LEase - 3 Copies

DISTRICT IV

1220 S. ST. FRANCIS DR., SANTA FE, NM 87505

WELL LOCATION AND ACREAGE DEDICATION PLAT☐ AMENDED REPORT

API Number 30-025-39178	Pool Code 24130	Pool Name EUNICE; SEVEN RIVERS - QUEEN, SOUTH
Property Code 302433	Property Name STATE A A/C 2	Well Number 98
OGRD No. 194849	Operator Name PETROHAWK OPERATING	Elevation 3568'

Surface Location

UL or lot No.	Section	Township	Range	Lot Idn	Feet from the	North/South line	Feet from the	East/West line	County
P	5	22-S	36-E		10	SOUTH	1308	EAST	LEA

Bottom Hole Location If Different From Surface

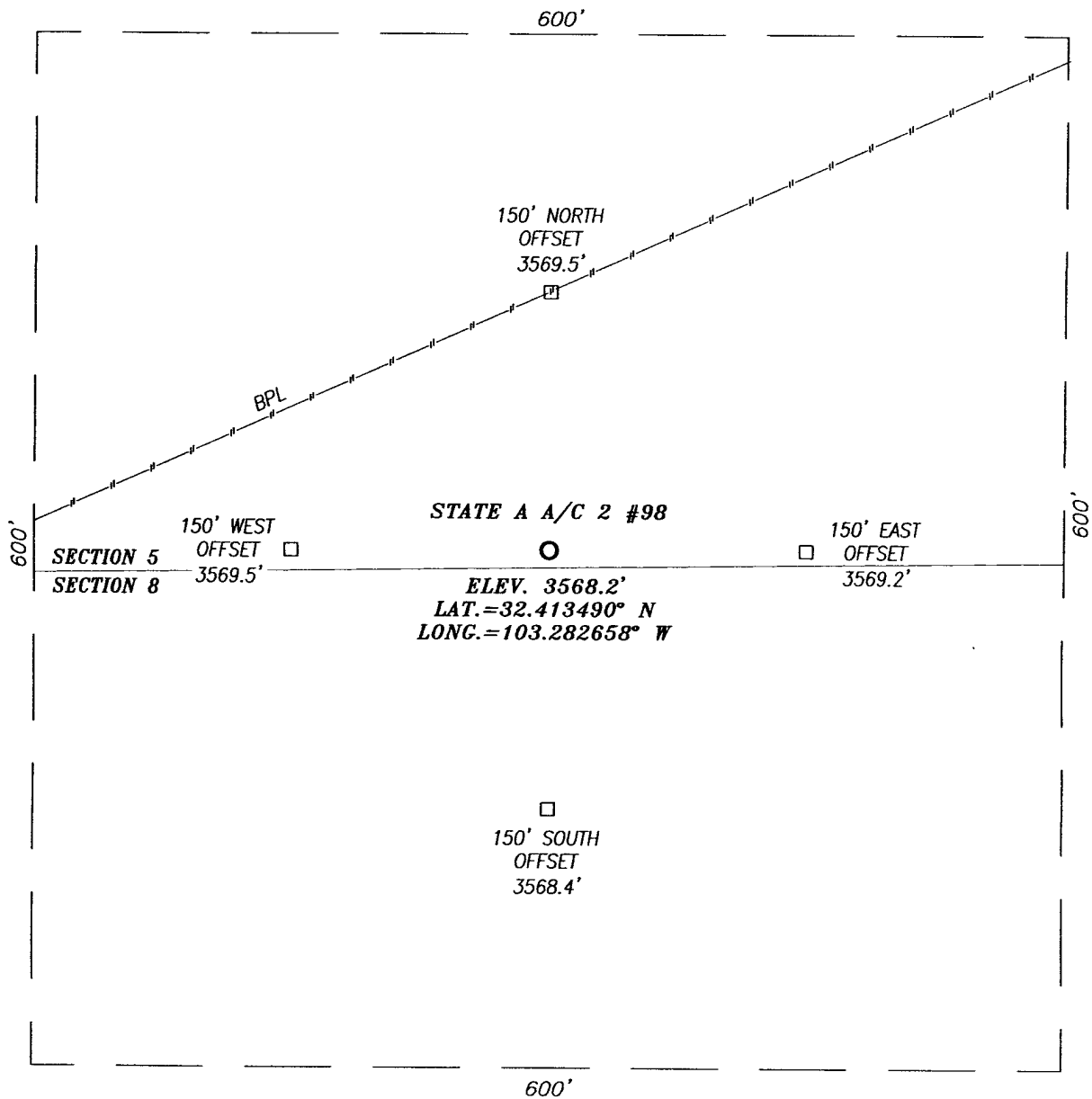
UL or lot No.	Section	Township	Range	Lot Idn	Feet from the	North/South line	Feet from the	East/West line	County

Dedicated Acres	Joint or Infill	Consolidation Code	Order No.
40			

**NO ALLOWABLE WILL BE ASSIGNED TO THIS COMPLETION UNTIL ALL INTERESTS HAVE BEEN CONSOLIDATED
OR A NON-STANDARD UNIT HAS BEEN APPROVED BY THE DIVISION**

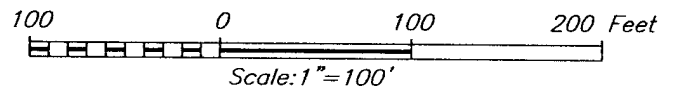
LOT 4	LOT 3	LOT 2	LOT 1
<p>GEODETIC COORDINATES NAD 27 NME. SURFACE LOCATION</p> <p>Y=515735.5 N X=824241.3 E</p> <p>LAT.=32.413490° N LONG.=103.282658° W</p>			
<p>OPERATOR CERTIFICATION</p> <p>I hereby certify that the information herein is true and complete to the best of my knowledge and belief, and that this organization either owns a working interest or unleased mineral interest in the land including the proposed bottom hole location or has a right to drill this well at this location pursuant to a contract with an owner of such mineral or working interest, or to a voluntary pooling agreement or a compulsory pooling order heretofore entered by the division.</p> <p><i>Eddie W Seay</i> 9/9/08 Signature Date <i>Eddie W Seay</i> Printed Name</p>			
<p>SURVEYOR CERTIFICATION</p> <p>I hereby certify that the well location shown on this plat was plotted from field notes of actual surveys made by me or under my supervision, and that the same is true and correct to the best of my belief.</p> <p>RONALD J. EIDSON JUNE 30, 2008 ON NEW MEXICO Date Surveyed Signature & Seal of Professional Surveyor <i>Ronald J. Eidson</i> 9/9/08 Certificate No. GARY G. EIDSON 12841 RONALD J. EIDSON 3239</p>			


SECTION 5, TOWNSHIP 22 SOUTH, RANGE 36 EAST, N.M.P.M.,
 LEA COUNTY, NEW MEXICO



DIRECTIONS TO LOCATION

FROM THE INTERSECTION OF COUNTY ROAD #E21 (DELAWARE BASIN ROAD) AND COUNTY ROAD #E21 (WEAVER ROAD), GO EAST ON DELAWARE BASIN ROAD APPROX. 0.8 MILES. TURN LEFT AND GO NORTH APPROX. 0.95 MILES. THIS LOCATION IS WEST APPROX. 661 FEET.





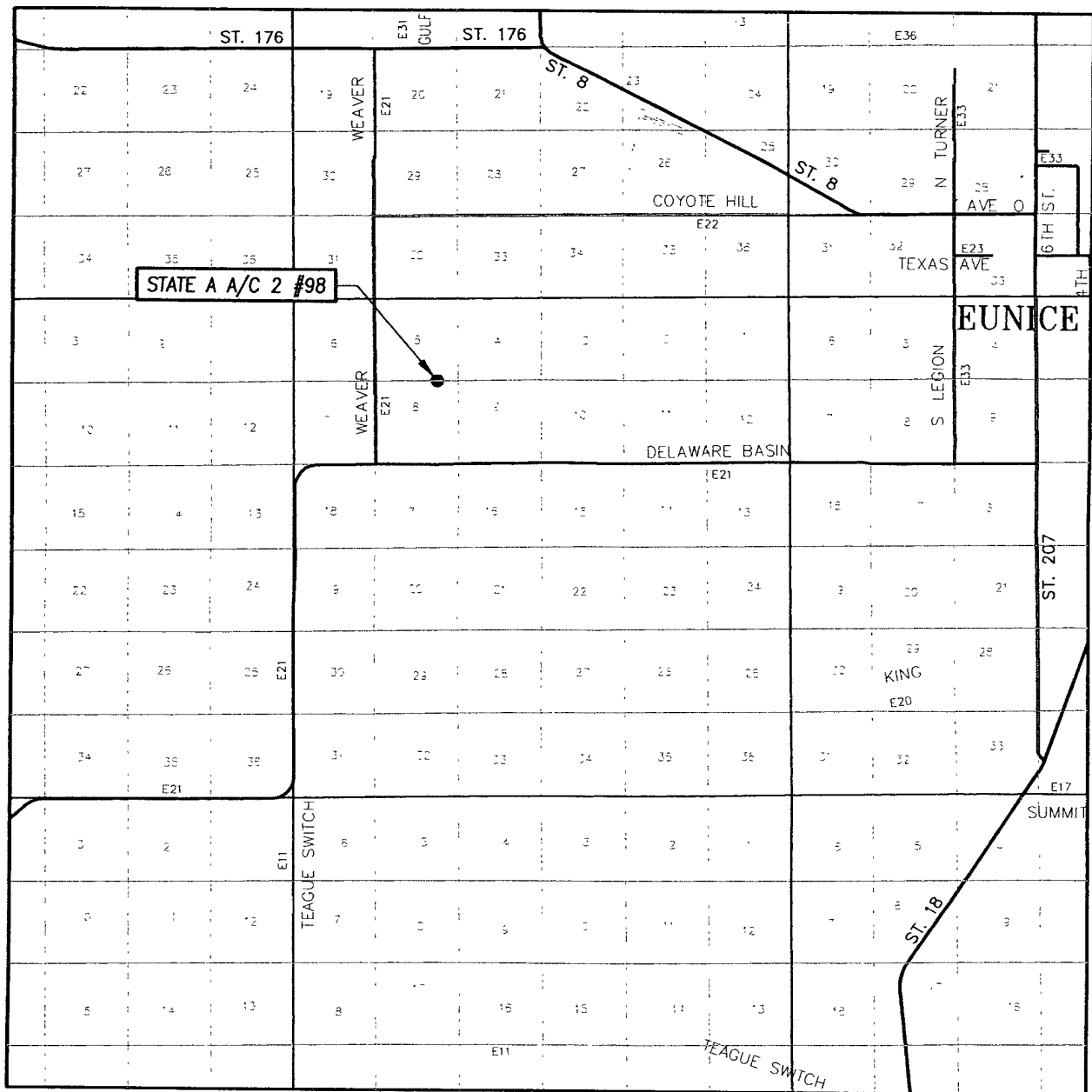
PROVIDING SURVEYING SERVICES
 SINCE 1946
JOHN WEST SURVEYING COMPANY
 412 N DAL PASO
 HOBBS, N.M. 88240
 (505) 393-3117

PETROHAWK OPERATING

STATE A A/C 2 #98 WELL
 LOCATED 10 FEET FROM THE SOUTH LINE
 AND 1308 FEET FROM THE EAST LINE OF SECTION 5,
 TOWNSHIP 22 SOUTH, RANGE 36 WEST, N.M.P.M.,
 LEA COUNTY, NEW MEXICO.

Survey Date: 6/30/08		Sheet 1 of 1 Sheets	
W.O. Number: 08.11.1041		Dr By: DSS	Rev 1:N/A
Date: 7/7/08		08111041	Scale:1"=100'

VICINITY MAP



SCALE: 1" = 2 MILES

SEC. 5 TWP. 22-S RGE. 36-E

SURVEY N.M.P.M.


COUNTY LEA STATE NEW MEXICO

DESCRIPTION 10' FSL & 1308' FEL

ELEVATION 3568'

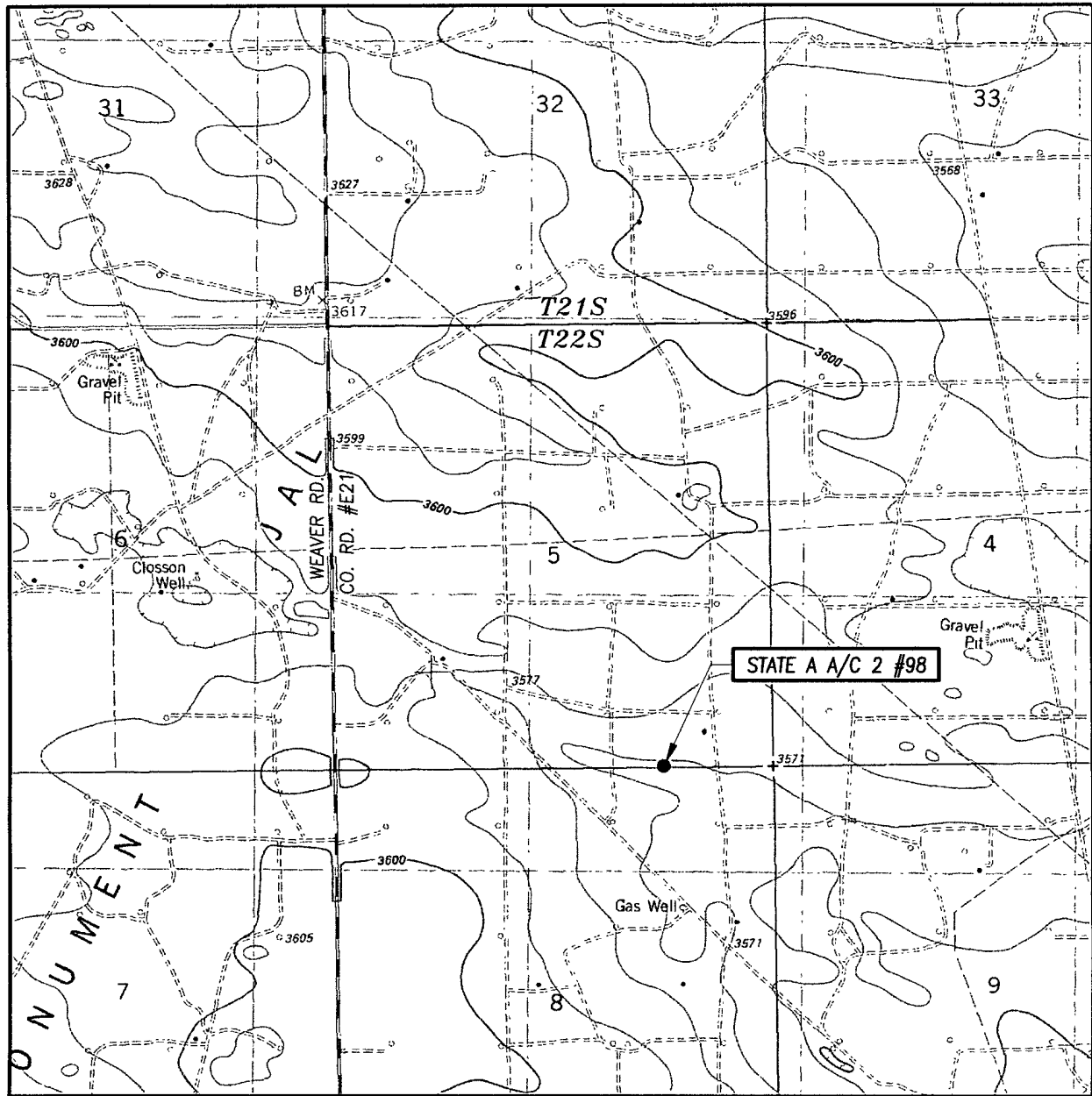
OPERATOR PETROHAWK OPERATING

LEASE STATE A A/C 2



PROVIDING SURVEYING SERVICES
SINCE 1946
JOHN WEST SURVEYING COMPANY
412 N. DAL PASO
HOBBS, N.M. 88240
(505) 393-3117

LOCATION VERIFICATION MAP



SCALE: 1" = 2000'

CONTOUR INTERVAL: 10'
OIL CENTER, NM

SEC. 5 TWP. 22-S RGE. 36-E

SURVEY N.M.P.M.

COUNTY LEA STATE NEW MEXICO

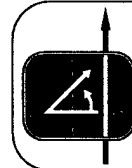
DESCRIPTION 10' FSL & 1308' FEL

ELEVATION 3568'

OPERATOR PETROHAWK OPERATING

LEASE STATE A A/C 2

U.S.G.S. TOPOGRAPHIC MAP
OIL CENTER, NM



PROVIDING SURVEYING SERVICES
SINCE 1946
JOHN WEST SURVEYING COMPANY
412 N DAL PASO
HOBBS, NM 88240
(505) 393-3117